



# CAPITAL

Collection



## Oxford & Leicester

*Light-filtering and BO FR fabrics in six timeless colours*

2800mm | 89 & 127mm

# Oxford & Leicester

A beautiful pair of matching fabrics. Oxford is a light-filtering FR fabric that allows natural light into a space, and Leicester is its BO counterpart.

Additional self-coloured BO backing available for three colours.

These fabrics, or a combination of both, are *ideal for commercial settings*.



Certified fire retardancy



Matching light-filtering and blackout fabrics



Suitable for vertical blinds

	Oxford	Leicester
Product	Roller & Vertical	Roller & Vertical
Composition	86% PES - 14% AC	55% AC - 45% PES
Roller - roll width	2800mm	2800mm
Roller - roll length	ca. 50m	ca. 32m
Vertical - roll width	89mm & 127mm	89mm & 127mm
Vertical - roll length	ca. 270m	ca. 170m
Weight	190g/m <sup>2</sup>	365g/m <sup>2</sup>
Thickness	0.38mm	0.65mm
FR Classifications	DIN 4102, CLASS B1   EN 13773, CLASS 1   NFPA 701	DIN 4102, CLASS B1   EN 13773, CLASS 1   NFPA 702
Colour Fastness (ISO 105 - B02)	Grade 3-4	Grade 3-4
Cleaning	Damp cloth	Damp cloth
Recommended cut method	Cold Cut, Ultrasonic	Cold Cut, Ultrasonic
Oeko-Tex Standard 100	Yes	Yes
Suitable for moist conditions	No	No

### Technical Specifications

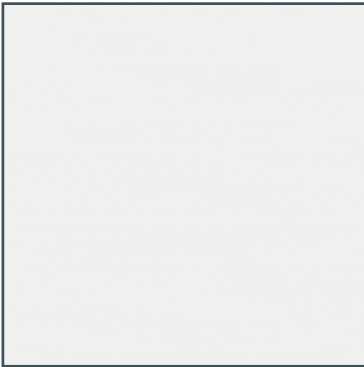
Colour	Thermal							Visual		
	Ts %	RS %	As %	GTOT INT GLAZING C		GTOT INT GLAZING D		Tv %	Rv %	Av %
				GTOT	CLASS	GTOT	CLASS			
<b>Oxford</b>										
Blanc	39	54	7	0.4	1	0.26	2	40	58	2
Chalk	37	51	13	0.41	1	0.27	2	35	51	14
Metal	30	47	24	0.42	1	0.27	2	19	37	44
Limestone	23	41	35	0.44	1	0.27	2	7	24	69
Raven	19	30	51	0.47	1	0.28	2	1	7	93
Grey	21	34	45	0.46	1	0.28	2	2	11	87
<b>Leicester*</b>										
Blanc	0	67	33	0.35	2	0.25	2	0	77	23
Chalk	0	67	33	0.35	2	0.25	2	0	77	23
Metal	0	67	33	0.35	2	0.25	2	0	77	23
Limestone	0	67	33	0.35	2	0.25	2	0	77	23
Raven	0	67	33	0.35	2	0.25	2	0	77	23
Grey	0	67	33	0.35	2	0.25	2	0	77	23

<b>Ts</b> = Solar Transmittance	<b>Rs</b> = Solar Reflectance	<b>As</b> = Solar Absorbance	<b>Tv</b> = Visual Transmittance	<b>Rv</b> = Visual Reflectance	<b>Av</b> = Visual Absorbance
<b>Gtot</b> = Total solar energy reflectance		<b>Glazing C</b> = Double glazing as described in EN 14501:2021		<b>Glazing D</b> = Solar control glazing as described in EN 14501:2021	

\*Data for white backed fabrics only.

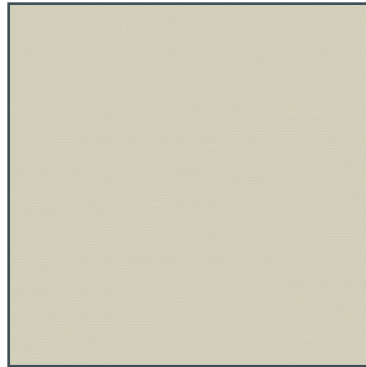
# Oxford

Light-filtering, fire retardant fabric



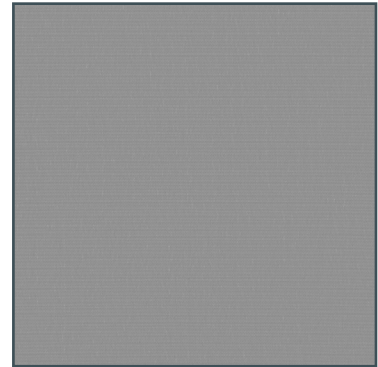
**Blanc**

2800mm  
89/127mm



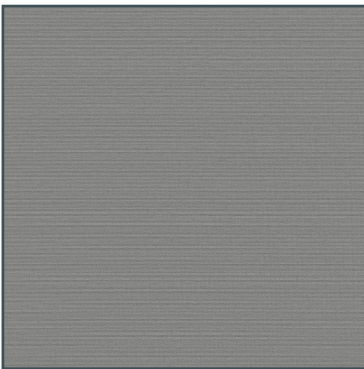
**Chalk**

2800mm  
89/127mm



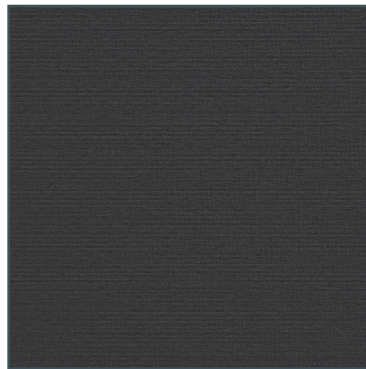
**Metal**

2800mm  
89/127mm



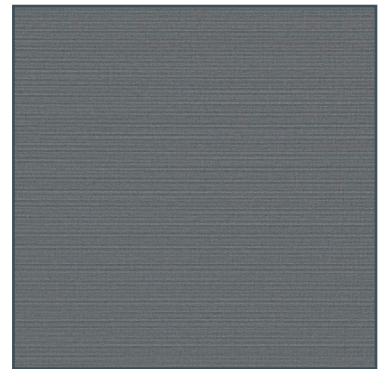
**Limestone**

2800mm  
89/127mm



**Raven**

2800mm  
89/127mm

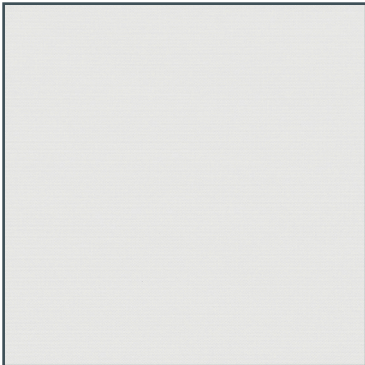


**Grey**

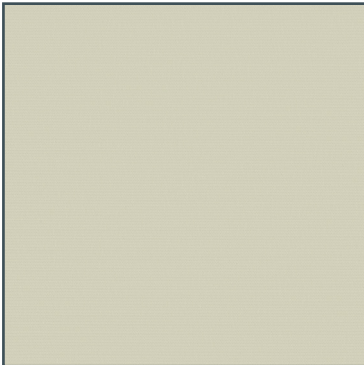
2800mm  
89/127mm

# Leicester

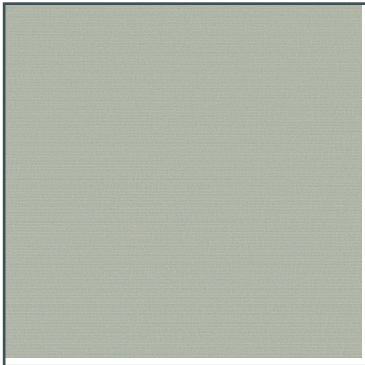
Blackout FR fabric with white or self-coloured backing options.



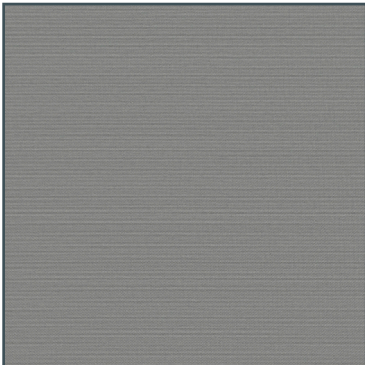
**Blanc** 2800mm  
89/127mm



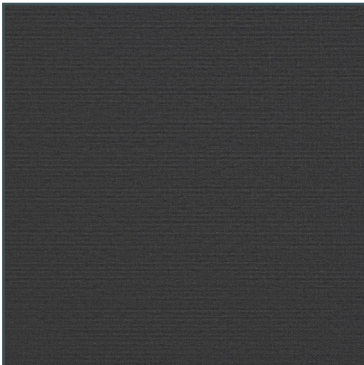
**Chalk** 2800mm  
89/127mm



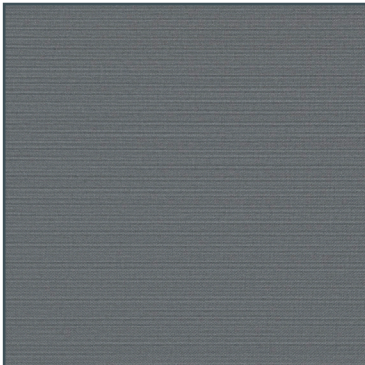
**Metal** 2800mm  
89/127mm



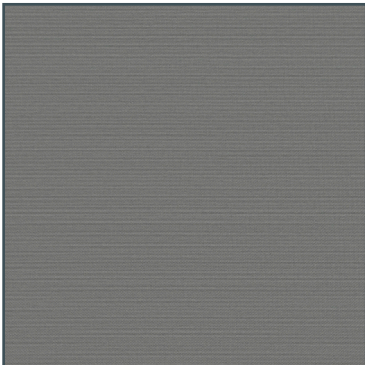
**Limestone** 2800mm  
89/127mm



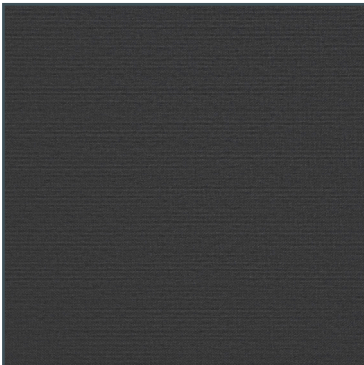
**Raven** 2800mm  
89/127mm



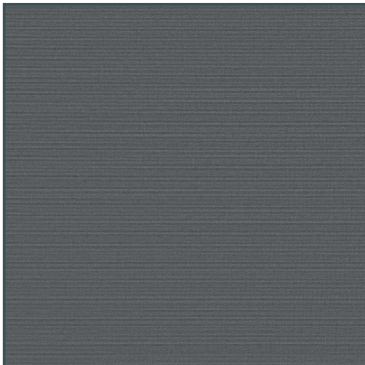
**Grey** 2800mm  
89/127mm



**Dual Limestone** 2800mm  
89/127mm



**Dual Raven** 2800mm  
89/127mm



**Dual Grey** 2800mm  
89/127mm